

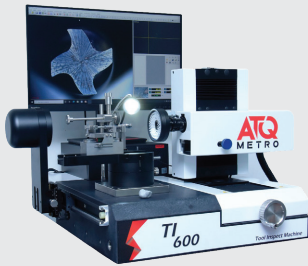


THE KEY TO YOUR FUTURE OF METROLOGY IS JUST A STEP AWAY.

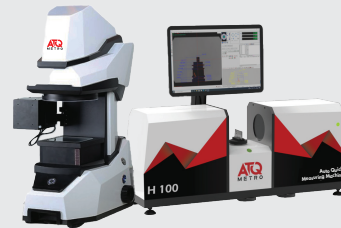
UNLOCK TODAY!



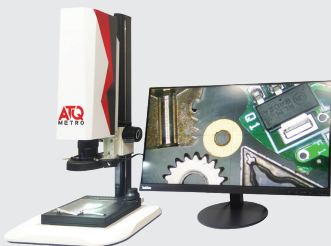
Vision Measuring Machines



**Cutting
Tool
Inspection
Machine**



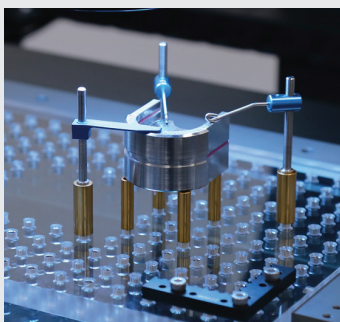
**Auto
Quick
Measurement
Machines**



**Digital
Magnifier**



**Profile
Projector**



**Metrology
Fixtures**



**Laser
Marking
Machine**



AUTHORIZED CHANNEL PARTNER FOR
RENISHAW
apply innovation™

NEW REVOLUTION IN SHOP FLOOR GAUGING SYSTEMS

ATQ METRO is pleased to introduce our new product line from M/s Renishaw Metrology Systems Pvt. Ltd.

The new Renishaw Equator™ is a versatile alternative to custom gauging, offering inspection of an unprecedented variety of manufactured parts. Part design changes or measurement of new parts is now possible in a fraction of the time as compared to conventional custom gauging.

The role of Equator™ gauging systems on the shop floor is to control manufacturing processes, gauges, for example sets of callipers, go / no-go gauges or bore gauges, which have been used for decades. The Equator system is a flexible gauge, designed to provide speed, repeatability and ease of use for manual or automated applications on the shop floor.

EQUATOR™ the versatile gauge™



SERVICES

- Vision Measuring Machines Maintenance
- Profile Projector Maintenance
- Calibration & Repair Services
- Dimensional Inspection Services
- 3D Scanning & Reverse Engineering
- Laser Marking Services
- Trainings
- CMM Services
- Height Gauge
- Roughness Tester



scan to get
more details

ATQ METRO PRIVATE LIMITED

Address- 51, Mahasainik Industrial Estate, Plot No T - 153/1,
MIDC Bhosari Pune, Maharashtra 411026

7875444909  

www.atqmetro.com | enquiry@atqmetro.com